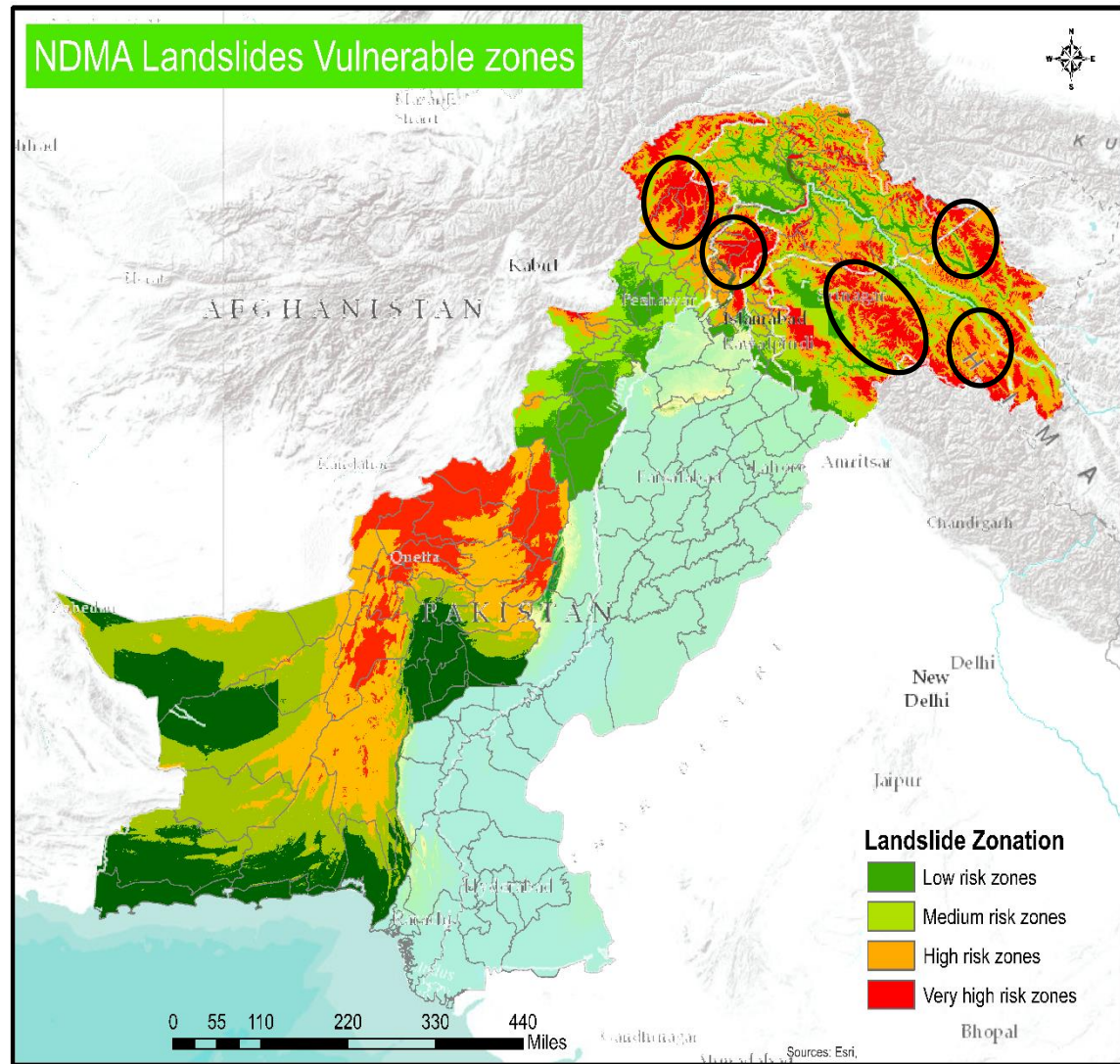
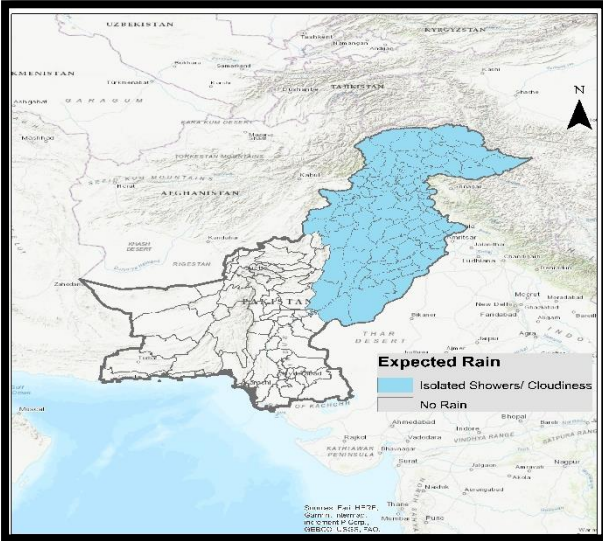
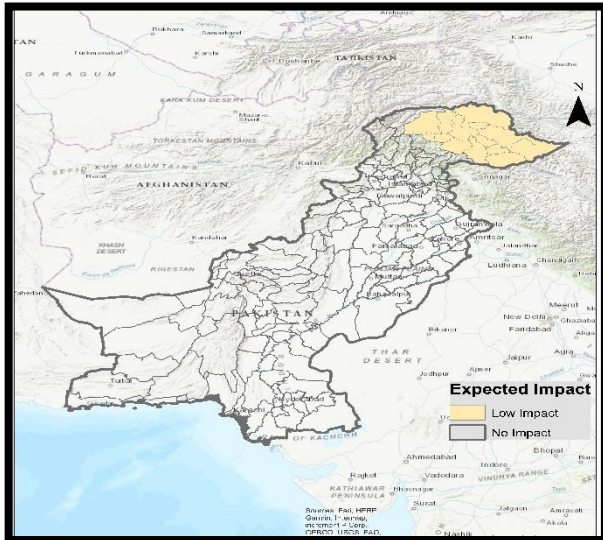


NDMA EXECUTIVE UPDATE – LANDSLIDE HAZARDS (22 DEC 2023)



FORECASTED IMPACTS

- No **adverse weather systems** expected during this week (22 – 30 Dec 23)
- However, if the rainfall exceeds from 50-60 mm / day and the rain continuous, be watchful of landslides, slope failures, rock falls and ground subsidence in high vulnerable zones (encircled) in map

AREAS TO WATCH

Khyber Pakhtunkhwa. Chitral, Swat, Upper Dir, Shangla, Batagram, Mansehra, Abbotabad, Khyber Agency, Tor ghar, Kohistan

Gilgit Baltistan. Hunza, Skardu, Ghanche, Astore

State of AJ&K. Muzaffarabad, Haveli, Battian

Pre-Landslide Signs:

- Developments of cracks on the ground, deepened cracks, and ground subsidence.
- Slanting of trees, electrical posts, fences, and telephone posts.
- Cracks in the floors and walls of buildings located on slopes.
- Sudden appearance of springs, emerging muddy water, blockage, or disappearance of existing springs.

Immediate Action:

- If you observe any of the above pre-landslide signs, it is crucial to move away from the affected areas immediately.

GUIDANCE ISSUED

- PDMA's to undertake **regular public awareness on all media channels / social media** to maximise general public's **knowledge on risks associated with Landslides**.
- **Rescue Services, Armed Forces** and leading **NGOs / CSOs** to **ensure availability of personnel / equipment** in the indicated areas & **be on stand-by for rapid response** in case of any forecasted adverse weather systems.